

## BR7 Series Generator

### Standard Features

- Comply with the most common standard in terms of GB755, IEC60034, BS5000, VDE0530, CSAC22.2-100
- Single or double bearings are available, options for all kinds of adaptors and disc plates
- 12-end reconnectable winding terminals to get different voltages
- Standard "H" insulation class
- Convenient installation and maintenance for lead-end rotated diodes and adaptor connected bolts
- Standard sealed maintenance - free bearings
- Standard IP23 protection, optional serve environment protection
- Optional auxiliary winding in excitation system
- Optional transformer-controlled system to increase motor starting capability

### Options

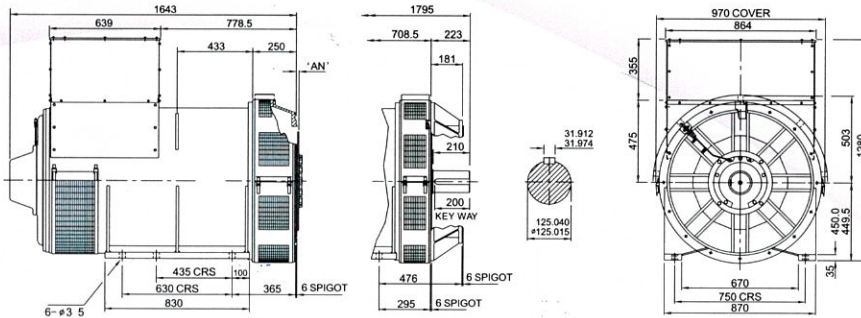
- Winding RTD
- Winding protection thermistor and relay
- Anti-condensation heater
- Air filter
- Droop CT

### BR7 3-PHASE INDUSTRIAL RATINGS

		400V-50Hz (1500 RPM)			600V-50Hz	480V-60Hz (1800 RPM)		
AMBIENT TEMPERATURE		CONT. 40°C	TEMP. 40°C	TEMP. 27°C	CONT. 40°C	CONT. 40°C	TEMP. 40°C	TEMP. 27°C
TEMPERATURE RISE		CONT. 125°C	S.B 150°C	S.B 163°C	CONT. 105°C	CONT. 125°C	S.B 150°C	S.B 163°C
BR734B	KVA	1400	1460	1500	1237.5	1690	1760	1810
	KW	1120	1168	1200	990	1352	1408	1448
	EFFICIENCY	95.3	95.2	95.1	95.1	95.5	95.4	95.3
BR734CS	KVA	1563	1628	1674	1386	1905	1986	2041
	KW	1250	1302	1339	1109	1524	1589	1633
	EFFICIENCY	95.7	95.6	95.5	95.3	95.9	95.8	95.7
BR734DS	KVA	1688	1760	1810	N/A	2025	2146	2208
	KW	1350	1408	1448	N/A	1620	1717	1766
	EFFICIENCY	96.2	96.1	96.0	N/A	96.3	96.2	96.1
BR734ES	KVA	1900	1980	2035	1662.5	2300	2395	2465
	KW	1520	1584	1628	1330	1840	1916	1972
	EFFICIENCY	96.2	96.1	96	95.6	96.3	96.3	96.2
BR734FS	KVA	2063	2150	2230	1772	2578	2682	2760
	KW	1650	1720	1785	1418	2062	2146	2208
	EFFICIENCY	96.4	96.3	96.2	95.6	96.5	96.4	96.3
BR734GS	KVA	2250	2345	2412	1944	2750	2800	2945
	KW	1800	1876	1930	1555	2200	2288	2356
	EFFICIENCY	96	95.9	95.9	95.7	96.1	96	95.9
BR734	KVA	2340	2400	2500	2160	2875	2900	3012
	KW	1872	1920	2000	1728	2320	2320	2410
	EFFICIENCY	96	95.8	95.7	95.9	96.2	96	95.9

Note: The generators have been designed for use in a maximum ambient temperature of 40° C and altitude less than 1000m above sea level. All generators are 4-poles ones. Extended range voltage can be got from single windings or from 12-leads adjusted. Other special voltage range can be met by Bridgeford.

# BRIDGEFORD<sup>®</sup> ALTERNATORS

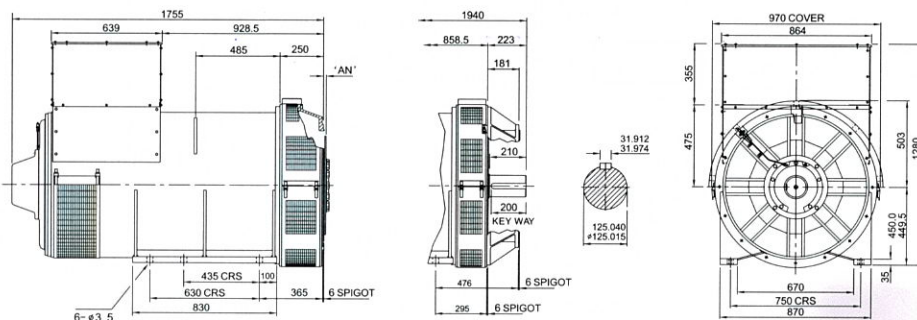


## BR734 B&CS

COUPLING DISC	AN
SAE NO.18	15.7
SAE NO.21	0
SAE NO.24	0

SINGLE-BEARING ADAPTOR	SAE NO.0
SAE NO.00	

DOUBLE-BEARING ADAPTOR	SAE NO.0
SAE NO.00	

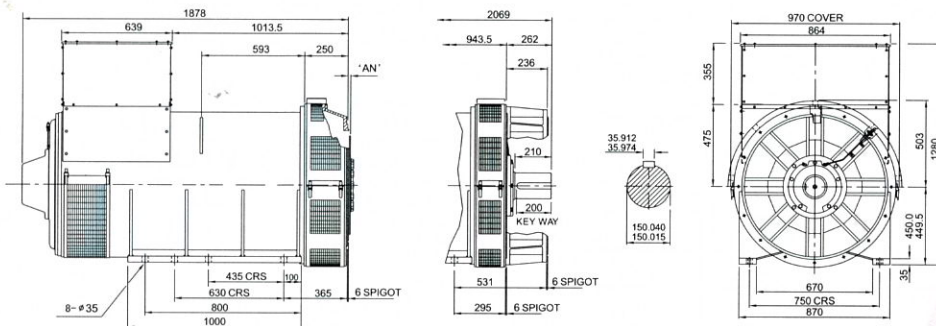


## BR734 DS&ES

COUPLING DISC	AN
SAE NO.18	15.7
SAE NO.21	0
SAE NO.24	0

SINGLE-BEARING ADAPTOR	SAE NO.0
SAE NO.00	

DOUBLE-BEARING ADAPTOR	SAE NO.0
SAE NO.00	

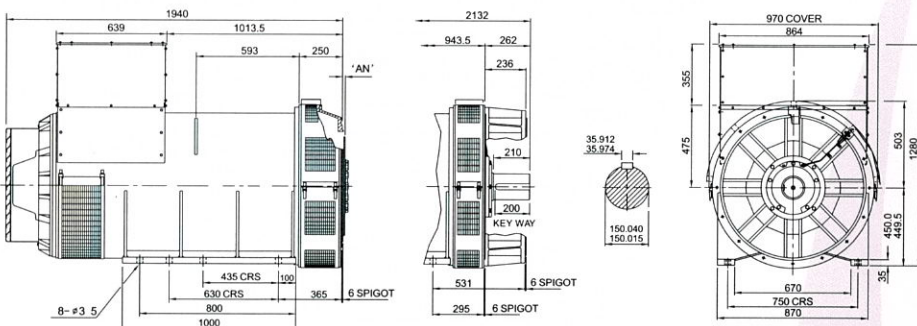


## BR734 FS

COUPLING DISC	AN
SAE NO.18	15.7
SAE NO.21	0
SAE NO.24	0

SINGLE-BEARING ADAPTOR	SAE NO.0
SAE NO.00	

DOUBLE-BEARING ADAPTOR	SAE NO.0
SAE NO.00	



## BR734 GS & BR734

COUPLING DISC	AN
SAE NO.18	15.7
SAE NO.21	0
SAE NO.24	0

SINGLE-BEARING ADAPTOR	SAE NO.0
SAE NO.00	

DOUBLE-BEARING ADAPTOR	SAE NO.0
SAE NO.00	

LENGTH	A	B
BR7F	1940	2132
BR7G	2020	2212

### TRANSPORTATION DATA

TYPE	SINGLE-BEARING		DOUBLE-BEARING	
	N.W.(kg)	G.W.(kg)	N.W.(kg)	G.W.(kg)
BR734B	2760	2833	2710	2779
BR734CS	3018	3091	2967	3036
BR734DS	3318	3391	3267	3336
BR734ES	3556	3629	3506	3575
BR734FS	3840	3913	3807	3876
BR734GS	4054	4127	4022	4091
BR734	4760	4824	4715	4801