

BR3 Series Generator

Standard Features

- Comply with the most common standard in terms of GB755, IEC60034, BS5000, VDE0530, CSAC22.2-100
- Single or double bearings are available, options for all kinds of adaptors and disc plates
- 12-end reconnectable winding terminals to get different voltages
- Standard "H" insulation class
- Convenient installation and maintenance for lead-end rotated diodes and adaptor connected bolts
- Standard sealed maintenance - free bearings
- Standard IP23 protection, optional serve environment protection
- Optional auxiliary winding in excitation system
- Optional transformer-controlled system to increase motor starting capability

Options

- Winding RTD
- Winding protection thermistor and relay
- Anti-condensation heater
- Air filter
- Droop CT

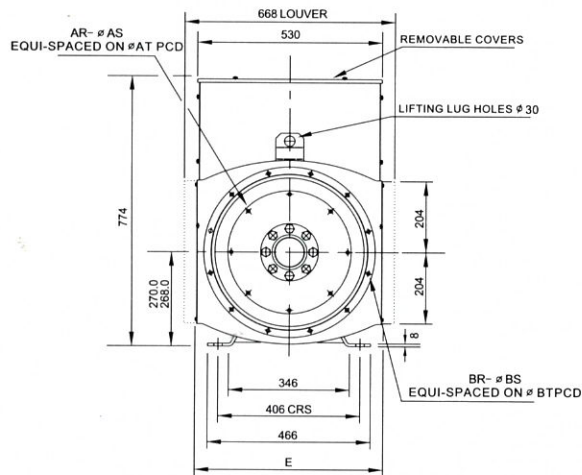
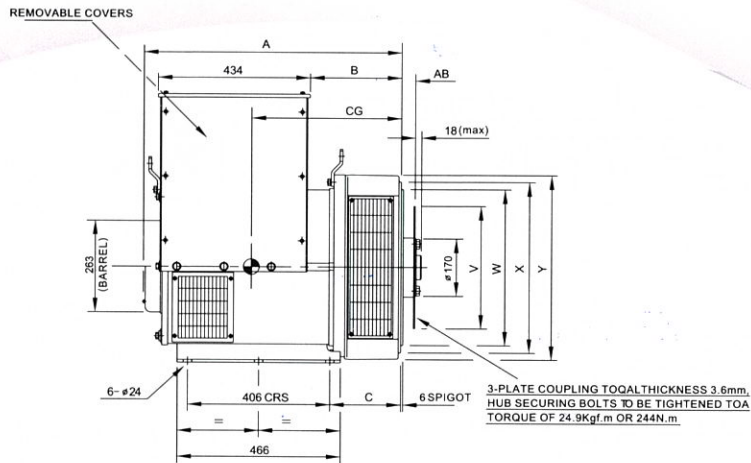
BR3 3-PHASE INDUSTRIAL RATINGS

		50 Hz (1500PM)			60 Hz 1800PM)					50 Hz (1500PM)			60 Hz (1800PM)		
VOLTAGE		CLASS "H" TEMPERATURE - RISE (125°C)			CLASS "H" TEMPERATURE - RISE (125°C)			VOLTAGE		CLASS "H" TEMPERATURE - RISE (125°C)			CLASS "H" TEMPERATURE - RISE (125°C)		
STAR-SERIES		380	400	415	440	460	480	STAR-SERIES		380	400	415	440	460	480
STAR-PARALLEL		190	200	208	220	230	240	STAR-PARALLEL		190	200	208	220	230	240
DELTA-SERIES		220	230	240	254	266	277	DELTA-SERIES		220	230	240	254	266	277
BR274C	KVA	100	100	100	117.5	117.5	125	BR274GS	KVA	180	180	180	218.5	218.5	231.4
	KW	80	80	80	94	94	100		KW	144	144	144	174.8	174.8	185.1
	EFFICIENCY	89.9	90.3	90.6	90.5	90.8	91		EFFICIENCY	92	92.4	92.6	92.4	92.7	92.7
BR274D	KVA	125	125	125	150	150	159.6	BR274H	KVA	200	200	200	245	245	255
	KW	100	100	100	120	20	117		KW	160	160	160	196	196	204
	EFFICIENCY	90.3	90.8	91	90.4	90.7	91.3		EFFICIENCY	92.2	92.2	92.3	92.6	92.6	92.8
BR274E	KVA	140	140	140	167.5	167.5	178.8	BR274J	KVA	225	225	225	263	263	294
	KW	112	112	112	134	134	143		KW	180	180	180	211	211	235
	EFFICIENCY	91.3	91.7	92	91.7	92.1	92.1		EFFICIENCY	92.2	92.5	92.7	92.7	92.8	92.8
BR274F	KVA	160	160	160	190	190	206.3	BR274K	KVA	250	250	250	299	312.5	312.5
	KW	28	28	128	152	152	165		KW	200	200	200	239.2	250	250
	EFFICIENCY	92..0	92.3	92.5	92.5	92.7	92.7		EFFICIENCY	92.5	92.7	92.8	92.7	92.8	92.9

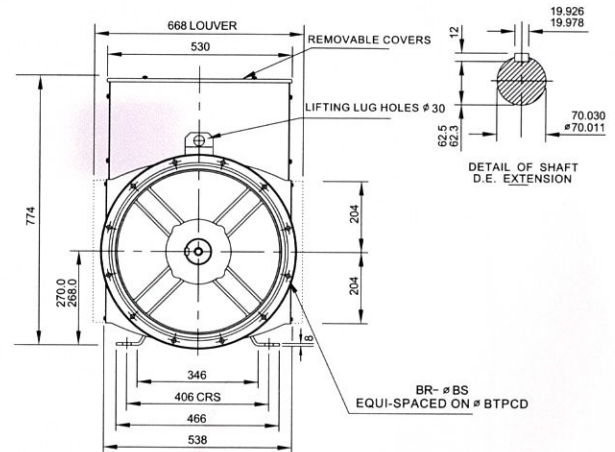
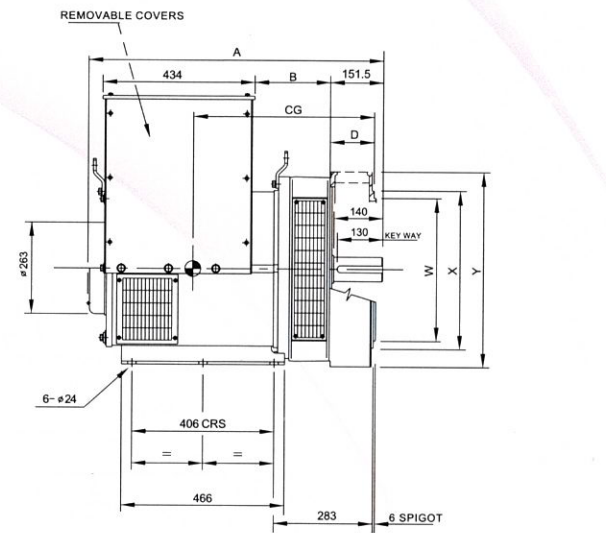
Note: The generators have been designed for use in a maximum ambient temperature of 40° C and altitude less than 1000m above sea level. All generators are 4-poles ones. Extended range voltage can be got from single windings or from 12-leads adjusted. Other special voltage range can be met by Bridgeford.

BRIDGEFORD[®] ALTERNATORS

BR3 SINGLE-BEARING



BR3 DOUBLE-BEARING



DIMENSION			
TYPE	A	B	CG
BR274C	750/736	274/260	365/398
BR274D	750/736	274/260	380/466
BR274D	865/851	389/375	390/489
BR274F	865/851	389/375	415/527
BR274GS	915/904	439/425	435/579
BR274H	955/941	479/4665	455/625
BR274J/K	1000	535	440

DIMENSION			
TYPE	A	B	CG
BR274C	842	215	420
BR274D	842	215	435
BR274E	957	330	445
BR274F	957	330	470
BR274GS	1007	380	490
BR274H	1047	420	510

COUPLING DISC					
S.A.E.NO.	AB	AR	AS	AT	V
10	53.89	8	11	295.3	314.2
11.5	39.68	8	11	333.3	352.3
14	25.40	8	13.5	438.2	466.6

ADAPTOR								
S.A.E.NO.	BR	BS	BT	C*	E	W	X	Y
3	12	12.7	530.2	216.3	554	511.1	553	580
4	12	11	466.7	202	554	447.6	490	530
5	12	11	428.6	202	554	409.5	451	530

ADAPTOR							
S.A.E.NO.	BR	BS	BT	D	W	X	Y
6105	12	13.5	440	143	392	406.9	553
6135	12	11	552	151.5	516	532	572

TRANSPORTATION DATA			
TYPE	NET WEIGHT (kg)	GROSS WEIGHT (kg)	PACKAGE SIZE (mm)
BR3A	385	434	97 x 60 x 90
BR3C	425	470	97 x 60 x 90
BR3DS	455	532	110 x 60 x 90
BR3ES	500	570	110 x 60 x 90
BR3EM	550	622	110 x 60 x 90
BR3E/F	600	668	110 x 60 x 90
BR3G/H	720	750	115 x 60 x 90

TRANSPORTATION DATA			
TYPE	NET WEIGHT (kg)	GROSS WEIGHT (kg)	PACKAGE SIZE (mm)
BR274C	394	436	110 x 60 x 90
BR274D	430	472	110 x 60 x 90
BR274E	470	510	120 x 60 x 90
BR274F	519	570	120 x 60 x 90
BR274GS	571	622	120 x 60 x 90
BR274H	617	658	120 x 60 x 90

* If it is BR3G/H SAE1, "C" dimension is 202