

BR2 Series Generator

Standard Features

- Comply with the most common standard in terms of GB755, IEC60034, BS5000, VDE0530, CSAC22.2-100
- Single or double bearings are available, options for all kinds of adaptors and disc plates
- 12-end reconnectable winding terminals to get different voltages
- Standard "H" insulation class
- Convenient installation and maintenance for lead-end rotated diodes and adaptor connected bolts
- Standard sealed maintenance - free bearings
- Standard IP23 protection, optional serve environment protection
- Optional auxiliary winding in excitation system
- Optional transformer-controlled system to increase motor starting capability

Options

- Winding RTD
- Winding protection thermistor and relay
- Anti-condensation heater
- Air filter
- Droop CT

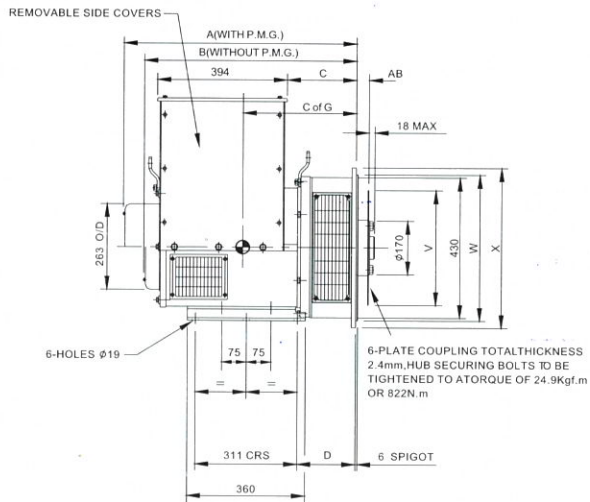
BR2 3-PHASE INDUSTRIAL RATINGS

		50 Hz (1500PM)			60 Hz 1800PM)		
VOLTAGE		CLASS "H" TEMPERATURE - RISE (125°C)			CLASS "H" TEMPERATURE - RISE (125°C)		
STAR-SERIES		380	400	415	440	460	480
STAR-PARALLEL		190	200	208	220	230	240
DELTA-SERIES		220	230	240	254	266	277
BR144K	KVA	42.5	42.5	42.5	50	50	50
	KW	34	34	34	40	40	40
	EFFICIENCY	86.5	87.1	87.4	87.2	87.5	87.9
BR244D	KVA	50	50	50	62.5	62.5	62.5
	KW	40	40	40	50	50	50
	EFFICIENCY	87.8	88.2	88.5	88.2	88.6	88.8
BR244E	KVA	62.5	62.5	62.5	78	78	78
	KW	50	50	50	62.5	62.5	62.5
	EFFICIENCY	88.1	88.1	88.9	88.9	89.2	89.4
BR244F	KVA	72.5	72.5	72.5	87.5	87.5	87.5
	KW	58	58	58	70	70	70
	EFFICIENCY	89.6	89.9	90.1	90.3	90.6	90.6
BR244S	KVA	80	80	80	94	94	94
	KW	64	64	64	75.2	75.2	75.2
	EFFICIENCY	89.6	89.9	90.1	90.3	90.6	90.6
BR244G	KVA	87.5	87.5	87.5	109.4	109.4	109.4
	KW	70	70	70	87.5	87.5	87.5
	EFFICIENCY	89.9	90.2	90.4	90.6	90.8	91

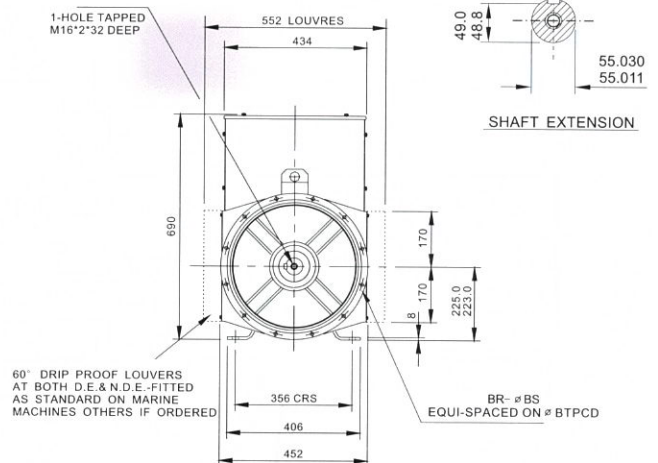
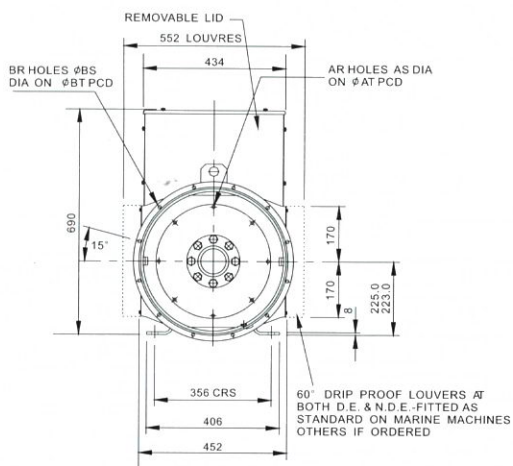
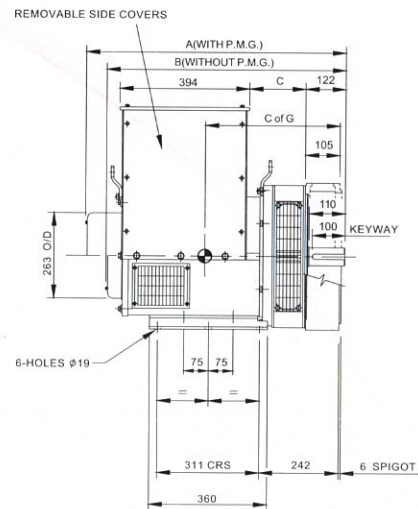
Note: The generators have been designed for use in a maximum ambient temperature of 40° C and altitude less than 1000m above sea level. All generators are 4-poles ones. Extended range voltage can be got from single windings or from 12-leads adjusted. Other special voltage range can be met by Bridgeford.

BRIDGEFORD[®] ALTERNATORS

BR2 SINGLE-BEARING



BR2 DOUBLE-BEARING



DIMENSION					
TYPE	A	B	C	C of G	NET WEIGHT (KG)
BR144K	710	647	210	311	235
BR244D	710	647	210	321	250
BR244E	800	737	300	336	270
BR244F	800	737	300	346	310
BR244S	845	782	345	351	322
BR244G	845	782	345	361	350

* The dimension of "K" and "D" will be increased 14.3mm if SAE1 adaptor used.

COUPLING DISC					
S.A.E.NO.	AB	AR	AS	AT	V
8	61.90	6	11	244.5	263.4
10	53.98	8	11	295.3	314.2
11.5	39.68	8	11	333.3	352.3
14	25.40	8	13.5	438.2	466.6

ADAPTOR						
S.A.E.NO.	C	BR	BS	BT	W	X
1	191.3	12	12.7	530.2	511.1	553
2	177	12	11	466.7	447.6	490
3	177	12	11	428.7	409.5	451
4	177	12	11	381	361.9	403

DIMENSION					
TYPE	A	B	C	C of G	NET WEIGHT (KG)
BR144K	792	729	170	368	250
BR244D	792	729	170	378	270
BR244E	882	819	260	393	290
BR244F	882	819	260	403	320
BR244S	927	864	305	408	335
BR244G	927	864	305	418	360

ADAPTOR						
S.A.E.NO.	BR	BS	BT	W	X	Y
6105	12	13.5	440	392	406.9	553
6135	12	11	552	516	532	572

TRANSPORTATION DATA			
TYPE	NET WEIGHT (kg)	GROSS WEIGHT (kg)	PACKAGE SIZE (mm)
BR144K	255	275	960 x 660 x 1020
BR244D	270	295	960 x 660 x 1020
BR244E	290	315	960 x 660 x 1020
BR244F	330	345	960 x 660 x 1020
BR244S	345	360	960 x 660 x 1020
BR244G	370	385	960 x 660 x 1020